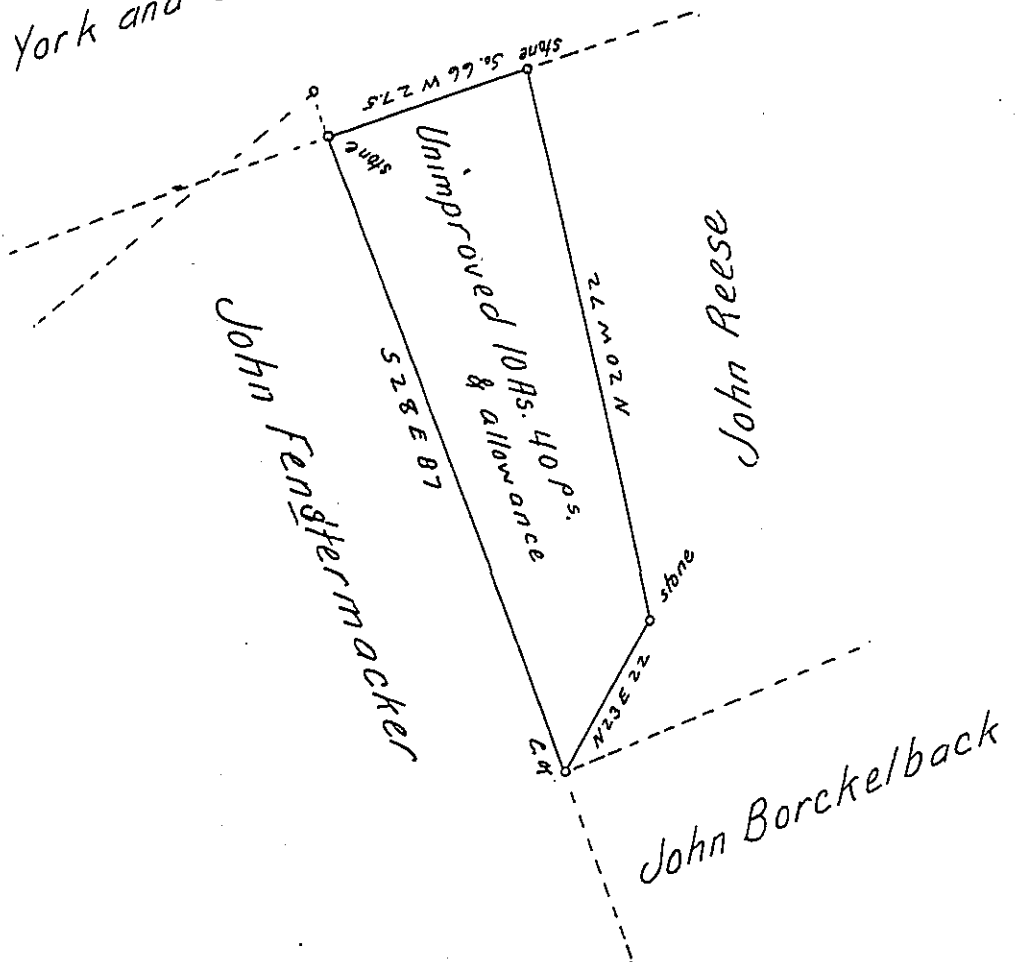


New York and Schuylkill Coal Company



Situate in Wayne Township Schuylkill County. Containing Ten acres and forty perches and the allowance of six per cent - surveyed on the twenty eighth day of June 1830 in pursuance of a warrant dated the 21st day of April 1830. granted to George Kurtz

To Jacob Spangler Esq^r. }
 Surveyor General of Penna. } P. W. Jackson D.S.

IN TESTIMONY that the above is a copy of the original remaining on file in the Department of Internal Affairs of Pennsylvania, made conformably to an Act of Assembly approved the 16th day of February, 1833, I have hereunto set my Hand and caused the Seal of said Department to be affixed at Harrisburg, this seventh day of July 1905.

Luca R. Perry
 Secretary of Internal Affairs.